

premium
plusuk™

0800 009 8822
sales@premiumplusuk.com
www.premiumplusuk.com

ALL PRICES EXCLUSIVE OF VAT

IDSMK1 IDISNK1

i-dental | Innovative Dental Products catalogue

NEW PRODUCT
I-SMILE tooth whitening gel



10%

carbamide peroxide

gentle-acting
orange flavour

16%

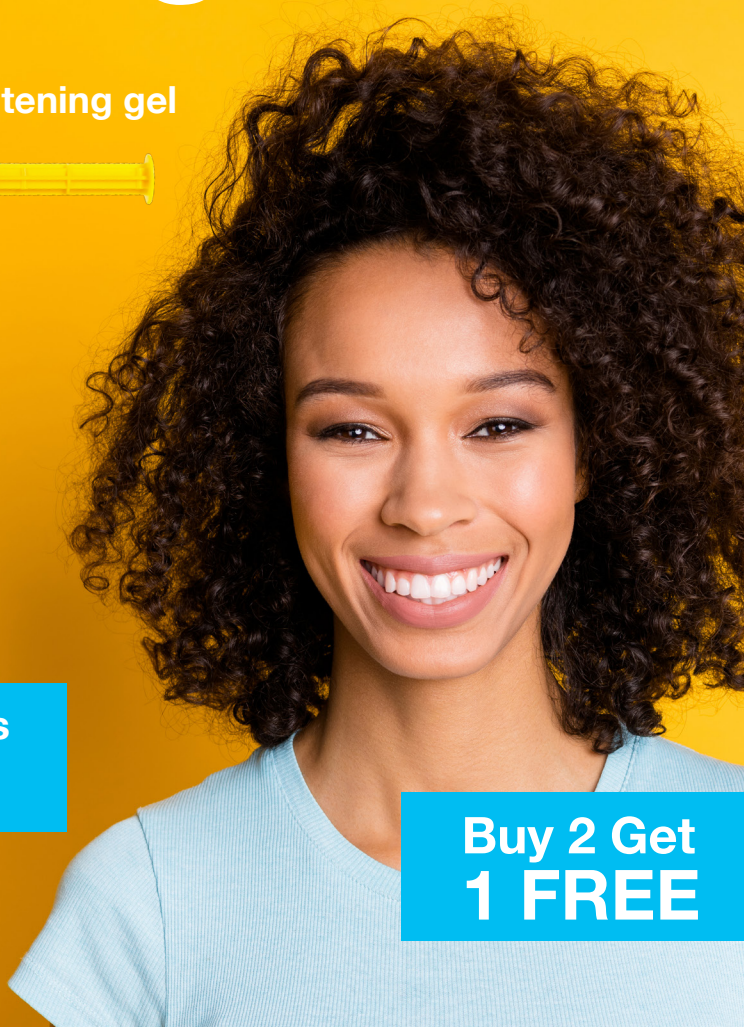
carbamide peroxide

regular-acting
apple flavour

4 x 3gm syringes
£18.95

ORDERS OVER £50
FREIGHT FREE

Buy 2 Get
1 FREE





i-Flow Flowable Composite
2gm + 3 tips A1, A2, A3, A3.5
each.....£12.45

Buy 2 Get 1 FREE



i-Fil GIC Filling Cement Set.....£31.95

Buy 2 Get 1 FREE

IDIFTA1, IDIFTA2, IDIFTA3, IDIFTA3 5

i-FLOW®

Light Curing Nano Flowable Composite

INDICATIONS

- ▶ For restorations of class III, IV and V cavities
- ▶ For root surface caries restorations
- ▶ For sealing pits and fissures
- ▶ For initial placement in class I and II cavities

ADVANTAGES

- ▶ Excellent flow characteristics
- ▶ High aesthetics
- ▶ Highly resistant
- ▶ Highly polishable
- ▶ Low shrinkage
- ▶ Radiopaque

IDIFITP

i-FIL®

Glass Ionomer Filling Cement

INDICATIONS

- ▶ For restoration of class III and V cavities
- ▶ For pits and fissures
- ▶ For restoration of Class I and II cavities in deciduous teeth

ADVANTAGES

- ▶ Fast-setting
- ▶ Aesthetic
- ▶ Excellent thermal expansion and translucency

CONTENTS

10g powder A2
 10g powder A3
 6gm liquid

IDIGEKI, IDIGES0B

i-GEL®**Phosphoric Acid Etching Gel and Liquid, 37% Phosphoric Acid****INDICATIONS**

- ▶ For tooth enamel and /or dentin etching

ADVANTAGES

- ▶ Optimum level of viscosity
- ▶ 37% phosphoric acid
- ▶ Removes smear layer and opens dental tubule orifices

**i-GEL Etching Gel****4 x 4.3gm syringe + 10 tips.....£12.95****1 x 42gm syringe + 20 tips.....£20.95**IDIGEKI
IDIGES0B**Buy 2 Get 1 FREE**

IDIIXTP

i-FIX®**Glass Ionomer Luting Cement****INDICATIONS**

- ▶ For cementation of metal and ceramic crowns, bridges, inlays, onlays, orthodontic brackets and bands

ADVANTAGES

- ▶ High adhesion to dentin, enamel and non-precious alloys
- ▶ Have low film thickness
- ▶ Good translucency
- ▶ Excellent biocompatibility

CONTENTS

20gm powder yellow

13gm liquid

**i-FIX GIC Luting Cement Set.....£30.95****Buy 2 Get 1 FREE**



i-FIX Plus Luting Cement Set.....£52.95

Buy 2 Get 1 FREE

i-FIX®Plus

Resin Modified Glass Ionomer Luting Cement

INDICATIONS

- ▶ For cementation of all metal bridges, inlays and onlays
- ▶ For cementation of metal orthodontic brackets to tooth structure

ADVANTAGES

- ▶ Radiopaque
- ▶ Has low film thickness
- ▶ Good aesthetic
- ▶ Available in one universal shade

CONTENTS

20gm powder yellow
13gm liquid

IDICOR1

i-CORE®

Dual Curing Core Build-up and Post Cementation Material

INDICATIONS

- ▶ For core build-up and post cementation

ADVANTAGES

- ▶ High adhesion
- ▶ Radiopaque
- ▶ Dual cure
- ▶ Highly resistant
- ▶ High aesthetics
- ▶ Auto-mix tips helps to obtain homogeneous consistency

CONTENTS

9g syringe
10 automix tips
10 intraoral-root canal tips
10 endo tips



i-CORE Build-up Set.....£39.95

Buy 2 Get 1 FREE

IDIPMPP, IDIPMWP

i-PRO®**Temporary Filling Material****INDICATIONS**

- ▶ For temporary fillings

ADVANTAGES

- ▶ Non sticky
- ▶ Excellent retention and easy to use
- ▶ Easily packable consistency
- ▶ Medium hardness after setting
- ▶ Eugenol free



i-PRO Temporary Filling Material, Pink or White 38gm, Hard 50gm.....£5.95

Buy 2 Get 1 FREE

IDIPLTP

i-PRO®LC**Light Curing Temporary Filling Material****INDICATIONS**

- ▶ For temporary fillings

ADVANTAGES

- ▶ Quick curing
- ▶ Easily packable consistency
- ▶ Ideal for temporary fillings of short and extended periods



2 x 4 gm i-PRO LC Temporary Filling Paste.....£11.95

Buy 2 Get 1 FREE

i-LINER®

Light Curing Compomer Liner

INDICATIONS

- For lining under polymer-based restorative materials, amalgams and porcelain restorations

ADVANTAGES

- Compensates filling shrinkage
- Prevents crack formations
- Minimizes micro fractures and secondary caries
- Material contains glass ionomer, this guarantee double adhesion to dentine

IDIDABP

i-DAM

Light Curing Liquid Rubber Dam

INDICATIONS

- For isolation of gingival tissues in cases where there is a risk of irritation by contact with products used in the clinical procedure (i.e. office whitening procedure)
- For complete isolation while sealing cavity preparation or endodontic treatment
- Blue shade

ADVANTAGES

- The product is sufficiently viscous and allows easy application and control over the place to be protected
- Excellent adhesion on the gingiva
- High adhesion isolation
- Easily removed
- No gingival tissue irritation



**i-LINER LC Composite liner 2.5gm
+ 5 tips.....£14.95**

Buy 2 Get 1 FREE



i-DAM 3.5gm syringe + 3 tips.....£9.95

Buy 2 Get 1 FREE

IDISHP1

i-SHINE®

Composite Polishing Paste

INDICATIONS

- ▶ For polishing of composite restorations (to restore smooth surface and natural luster, soften margins, improve overall appearance, and ensure longevity of the restoration).

ADVANTAGES

- ▶ Ultra-fine aluminium oxide particles
- ▶ Ensures high luster surface
- ▶ Optimum viscosity



i-SHINE 4gm Syringe.....£13.95

Buy 2 Get 1 FREE

IDIFCDI, IDIFMDI

i-FASTE®

Tooth Surface Polishing Paste

INDICATIONS

- ▶ For cleaning debris, plaque, calculus, stains, and other accretions from the teeth
- ▶ For the teeth surface preparation (cleaning and polishing) prior to restorations and fluoride treatment;
- ▶ For recontouring, finishing and polishing the surface after restoration to restore normal contours, smooth margins, and to create a high luster shine, the overall appearance and longevity of the restoration itself

ADVANTAGES

- ▶ Available in Orange Medium (IDIFMDI) and Menthol Coarse (IDIFCDI)



i-FASTE 100 x 2gm pots.....£21.95

Buy 2 Get 1 FREE



i-ZOE Cement Set.....£13.95

Buy 2 Get 1 FREE



**i-BONDING LC 5ml + 5 applicators
.....£17.95**

Buy 2 Get 1 FREE

i-ZOE®

Resin Modified Zinc Oxide-Eugenol Cement

INDICATIONS

- ▶ For bases and linings under amalgams
- ▶ For bases and linings under glass ionomers
- ▶ For temporary fillings
- ▶ For temporary fixing crowns and bridges

ADVANTAGES

- ▶ High strength
- ▶ Quick setting

CONTENTS

20gm Powder Yellow
6gm Liquid

IDIBLTP

i-BONDING®LC

Light Curing Adhesive

INDICATIONS

- ▶ Used to bond dentin and enamel to polymer based restorative materials, compomers, ceramic surfaces
- ▶ To improve retention of a restoration

ADVANTAGES

- ▶ Simple to use
- ▶ For universal application
- ▶ Good wetting properties

IDISEKP

i-SEAL®LC

Light Curing Pit and Fissure Sealant

INDICATIONS

- ▶ For sealing small pits and fissures

ADVANTAGES

- ▶ Highly flowable to flow easily into pits and fissures
- ▶ Bonds to enamel
- ▶ Ideal for pediatric sealant applications



i-SEAL 3.8gm Syringe + 3 tips.....£12.95

Buy 2 Get 1 FREE

IDIBATP

i-BAS®

Glass Ionomer Base Lining Cement

INDICATIONS

- ▶ For base linings and composite restorations

ADVANTAGES

- ▶ Fast-setting
- ▶ Radiopaque
- ▶ Excellent thermal expansion
- ▶ High strength and hardness



i-BAS GIC Cement Set.....£26.95

Buy 2 Get 1 FREE



i-BLOCK 3.8gm syringe + 3 tips...£10.95

Buy 2 Get 1 FREE



i-EDTA Canal Preparation Solution 50ml.....£6.95

Buy 2 Get 1 FREE

i-BLOCK

Light Curing Block Out Model Resin

INDICATIONS

- ▶ For creating reservoir space for bleaching trays
- ▶ For stone model repairs
- ▶ Other laboratory procedures
- ▶ Blue shade

ADVANTAGES

- ▶ The product is sufficiently viscous and allows easy application and control over the place to be protected
- ▶ High adhesion isolation
- ▶ Easily removed
- ▶ Blue shade

IDIEDLP

i-EDTA®Solution

Root Canal Preparation Solution, 17% EDTA

INDICATIONS

- ▶ Helps to clean, soften and widen the dentinal walls of the root canals

ADVANTAGES

- ▶ Neutral pH
- ▶ Helpful in enlarging of canals
- ▶ Opens calcified canals
- ▶ Water-based, easily reach narrow apical area and can be easily removed
- ▶ No liquid spillage - highest quality empty luer-lock type syringe
- ▶ Additional adaptor to tighten syringe to connector on the bottle

i-PAK®

Knitted Retraction Cord

INDICATIONS

- ▶ For gingival displacement and hemostasis before bonding and/or restorative placement procedures
- ▶ For use to aid in making impressions for fixed prosthetics
- ▶ 000: for lower anteriors; when luting near gingival and subgingival veneers; class III, IV, V restorations; first cord for "two cord" technique.
- ▶ 00: during preparation and cementation of veneers; restorative procedures dealing with thin, friable tissues.
- ▶ 0: for anterior teeth; as upper cord for "two cord" technique.
- ▶ 1: for the anterior teeth preparation.

ADVANTAGES

- ▶ Cord is made of 100% cotton
- ▶ The unique knitted design exerts a gentle continuous outward force following placement as knitted loops seek to open
- ▶ Rapid retraction/displacement
- ▶ Doesn't tangle in burs or packers
- ▶ Significantly greater quantities of hemostatic solution than conventional cords.



i-PAK Ultra Retraction Cord.....£12.95

Buy 2 Get 1 FREE

IPU11 (medium thin, blue)

Knitted retraction cord No. 1, 244cm

IPU01 (medium, lilac)

Knitted retraction cord No. 0, 244cm

IPU02 (thin, yellow)

Knitted retraction cord No. 00, 244cm

IPU03 (ultra thin, black)

Knitted retraction cord No. 000, 244cm

IDIXTA1, IDIXTA2, IDIXTA3, IDIXTA3 5,
IDIXTB2, IDIXTC2

i-XCITE®LC

Light Curing Nano Hybrid Composites

INDICATIONS

- ▶ For direct restorations of class I, II, III, IV and V cavities
- ▶ For indirect restorations such as metal and ceramic inlays, onlays
- ▶ For extended fissure sealing in molars and premolars
- ▶ For cores

ADVANTAGES

- ▶ Extremely homogeneous
- ▶ Highly resistant
- ▶ Easily handled
- ▶ Excellent biocompatibility
- ▶ Radiopaque
- ▶ Fast and easy polishing
- ▶ High aesthetic and durable
- ▶ Lasting shades



i-XCITE LC Composite 4 gm A1, A2, A3, A3.5, B2, C2.....£14.95

Buy 2 Get 1 FREE

Terms & Conditions

All prices shown are VAT exclusive. All prices, including delivery, special deals and products are subject to change without prior notice.

Premium Plus reserves the right to correct error and omissions in any of our advertising (paper or electronic). Catalogues (prices and specials) will be deemed to be superseded on the issue of the most recent catalogue/ flyer.

Goods will not be accepted for return without prior authorisation.

Customers must notify Premium Plus of a return within 7 days from the date of delivery.

Returned goods received after this time or without prior authorisation may not be accepted.

Costs incurred for the return of goods will be at the Customers expense, except in cases of incorrectly supplied or faulty goods.

Returned goods must be in a re-saleable condition (inclusive of all original packaging, unopened and unused).

Credit accounts are due strictly 30 days from the invoice date.

In the event that the Customer fails to pay any monies by the due date, interest may be charged at the rate of 2% interest per month.

The Customer is liable for all costs incurred by Premium Plus in the recovery of any debt, including legal fees and any associated costs.

Premium Plus retains ownership of the goods until they are paid in full.

Premium Plus shall endeavour to dispatch all orders received before 3pm for either next working day delivery or 1st Class Post dependant on order weight and value. However, delivery dates and times specified are approximate only.

Premium Plus cannot guarantee delivery times and will not be held liable or responsible if any timeframes cannot be met. Substitute goods may be supplied when those ordered are unavailable.

Equipment warranties are as stated in catalogues/flyers or instructions and are considered void if not used as per instructions, or considered to be mistreated / incorrectly serviced or cared for.

Terms and conditions will be provided prior to opening an account and will have deemed to be accepted once the account has been opening.

To view our full Terms & Conditions, Privacy Policy, Delivery and Returns policies please visit our website at www.premiumplusuk.com or contact us by phone or email.

If you no longer wish to receive this mail, please call us on 0800 009 88 22 or email us at sales@premiumplusuk.com.